



WEITKOWITZ
CABLE LUGS + TOOLS

*cable lugs
and
butt-connectors*



**according to Siemens standard
SN 71322**

WEITKOWITZ
Kabelschuhe und Werkzeuge GmbH

P.O. box 1765
D-31207 Peine

Wolterfer Straße 125
D - 31224 Peine

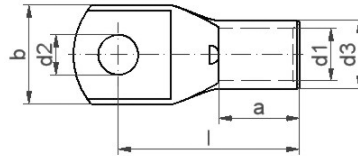
fon +49 (0) 51 71 / 70 61-0
fax +49 (0) 51 71 / 70 61-58

mail: info@weitkowitz.de
web: www.weitkowitz.de

HRB 201704 country court Hildesheim . manager: Wilfried Grobe

Tubular cable lugs 185 – 300 mm², Siemens standard SN 71322, for finewiring conductors

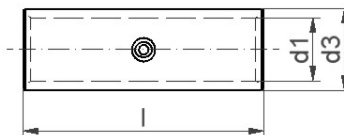
material: Cu-HCP according to DIN EN 13600
 surface: tin plated – type: with inspection hole



cross section mm ²	flat hole diameter M	article-no.	dimensions in mm						weight 100 pcs. approx. kg	packing unit pcs.	tool recommendation			
			d ₁	d ₃	d ₂	b	l	a			MP 2, AP 10 + HPI 10	API 35 + HPI 35, HPW 15	API 20 + HPI 20	API 30 + HPI 30, HPW 17
185 Sf	10	11389	21.0	27.0	10.5	39	72.5	30	18.19	25	MP 2, AP 10 + HPI 10	API 35 + HPI 35, HPW 15	API 20 + HPI 20	API 30 + HPI 30, HPW 17
	12	11390			13	39	70.5		17.79	25				
	16	11392			17	39	69		17.18	25				
	20	11393			21	39	72.5		18.00	25				
240 Sf	10	11394	22.5	29.0	10.5	42	82.5	35	25.70	20	MP 2, AP 10 + HPI 10	API 35 + HPI 35, HPW 15	API 20 + HPI 20	API 30 + HPI 30, HPW 17
	12	11395			13	42	80.5		25.20	20				
	16	11397			17	42	78.5		24.44	20				
	20	11398			21	42	75.5		23.41	20				
300 Sf	10	11355	24.5	32.0	10.5	45	94	42	33.69	20	MP 2, AP 10 + HPI 10	API 35 + HPI 35, HPW 15	API 20 + HPI 20	API 30 + HPI 30, HPW 17
	12	11356			13	45	94		33.41	20				
	16	11357			17	45	94		32.84	20				
	20	11358			21	45	94		32.11	20				

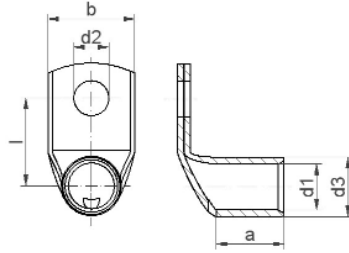
Tubular butt connectors 10 – 300 mm², Siemens standard SN 71322, for finewiring conductors

material: Cu-HCP according to DIN EN 13600
 surface: tin plated – type: with wirestop



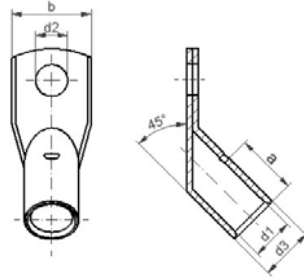
cross section mm ²	article-no.	dimensions in mm			weight 100 pcs. approx. kg	packing unit pcs.	tool recommendation			
		d ₁	d ₃	l			MP 2, AP 10 + HPI 10	API 35 + HPI 35, HPW 15	API 20 + HPI 20	API 30 + HPI 30, HPW 17
10 Sf	11460	5.0	8.0	30	0.82	100	MP 2, AP 10 + HPI 10	API 35 + HPI 35, HPW 15	API 20 + HPI 20	API 30 + HPI 30, HPW 17
16 Sf	11461	6.0	9.0	35	1.10	100				
25 Sf	11462	8.0	11.0	40	1.59	100				
35 Sf	11463	9.0	13.0	45	2.76	100				
50 Sf	11464	11.0	14.5	50	3.12	100				
70 Sf	11465	13.0	17.0	60	5.03	50				
95 Sf	11466	15.0	20.0	65	7.94	50				
120 Sf	11467	17.0	22.0	65	8.85	50				
150 Sf	11468	19.0	25.0	70	12.89	25				
185 Sf	11469	21.0	27.0	85	17.10	25				
240 Sf	11470	22.5	29.0	100	27.49	10				
300 Sf	11471	24.5	32.0	110	32.56	10				

Stubular cable lugs with 90° angle, 10 – 240 mm², Siemens standard SN 71322, for finewiring conductors
 material: Cu-HCP according to DIN EN 13600
 surface: tin plated – type: with inspection hole



cross section mm ²	flat hole diameter M	article-no.	dimensions in mm						weight 100 pcs. approx. kg	packing unit pcs.	tool recommendation			
			d ₁	d ₃	d ₂	b	l	a			MP 2, AP 10 + HPI 10	API 35 + HPI 35, HPW 15	API 20 + HPI 20	API 30 + HPI 30, HPW 17
10 Sf	5	11710	5,0	8.0	5.3	13	16	9	0.99	100				
	6	11711			6.4	13	16.5		1.03	100				
	8	11712			8.4	13.5	17		0.93	100				
	10	11713			10.5	16	18.5		1.04	100				
16 Sf	5	11785	6.0	9.0	5.3	13	16.5	10	1.08	100				
	6	11715			6.4	13	17		1.14	100				
	8	11716			8.4	13.5	17.5		1.21	100				
	10	11717			10.5	16	19		1.23	100				
	12	11718			13	19	24		1.44	100				
25 Sf	6	11720	8.0	11.0	6.4	17	18.5	12	1.61	100				
	8	11721			8.4	17	19		1.68	100				
	10	11722			10.5	17	20.5		1.72	100				
	12	11723			13	19	25.5		1.92	100				
35 Sf	6	11783	9.0	13.0	6.4	18	19.5	15	2.70	100				
	8	11725			8.4	18	20		2.81	100				
	10	11726			10.5	18	21.5		2.92	100				
	12	11727			13	19	26.5		3.11	100				
50 Sf	6	11784	11.0	14.5	6.4	21	23.3	17	3.42	100				
	8	11730			8.4	21	26.3		3.69	100				
	10	11731			10.5	21	27.3		3.79	100				
	12	11732			13	21	28.3		3.77	100				
	16	11733			17	27	29.3		4.02	100				
70 Sf	6	11734	13.0	17.0	6.4	25	27.5	20	5.07	50				
	8	11735			8.4	25	27.5		5.23	50				
	10	11736			10.5	25	28.5		5.38	50				
	12	11737			13	25	29.5		5.38	50				
	16	11738			17	28	30.5		5.25	50				
95 Sf	8	11786	15.0	20.0	8.4	29	29	22	7.77	50				
	10	11740			10.5	29	30		8.02	50				
	12	11741			13	29	31		8.11	50				
	16	11742			17	29	32		8.18	50				
120 Sf	8	11744	17.0	22.0	8.4	32	30.5	25	9.05	50				
	10	11745			10.5	32	31.5		9.35	50				
	12	11746			13	32	32.5		9.47	50				
	16	11747			17	32	33.5		9.60	50				
150 Sf	10	11749	19.0	25.0	10.5	36	33	28	13.76	25				
	12	11750			13	36	34		13.86	25				
	16	11751			17	36	35		14.09	25				
185 Sf	10	11789	21.0	27.0	10.5	39	34	29	15.82	25				
	12	11790			13	39	35		15.94	25				
	16	11792			17	39	36		16.23	25				
240 Sf	10	11794	22.5	29.0	10.5	42	35.5	34	20.70	20				
	12	11795			13	42	36.5		20.85	20				
	16	11797			17	42	37.5		21.22	20				

Tube cable lugs 45° angle, 10 – 240 mm², Siemens standard SN 71322, for finewiring conductors
 material: Cu-HCP according to DIN EN 13600
 surface: tin plated – type: with inspection hole



cross section mm ²	flat hole diameter M	article-no.	dimensions in mm					weight 100 pcs. approx. kg	packing unit pcs.	tool recommendation			
			d ₁	d ₃	d ₂	b	a						
10 Sf	5	11810	5.0	8.0	5.3	13	9	1.05	100	MP 2, AP 10 + HPI 10	API 35 + HPI 35, HPW 15	API 20 + HPI 20	API 30 + HPI 30, HPW 17
	6	11811			6.4	13		1.09	100				
	8	11812			8.4	13.5		0.99	100				
	10	11813			10.5	16		1.09	100				
16 Sf	5	11885	6.0	9.0	5.3	13	10	1.21	100				
	6	11815			6.4	13		1.27	100				
	8	11816			8.4	13.5		1.34	100				
	10	11817			10.5	16		1.35	100				
	12	11818			13	19		1.55	100				
25 Sf	6	11820	8.0	11.0	6.4	17	12	1.70	100				
	8	11821			8.4	17		1.77	100				
	10	11822			10.5	17		1.81	100				
	12	11823			13	19		2.00	100				
35 Sf	6	11883	9.0	13.0	6.4	18	15	2.97	100				
	8	11825			8.4	18		3.08	100				
	10	11826			10.5	18		3.20	100				
	12	11827			13	19		2.80	100				
50 Sf	6	11884	11.0	14.5	6.4	21	17	3.22	100				
	8	11830			8.4	21		3.50	100				
	10	11831			10.5	21		3.59	100				
	12	11832			13	21		3.57	100				
	16	11833			17	27		3.75	100				
70 Sf	6	11834	13.0	17.0	6.4	25	20	4.97	50				
	8	11835			8.4	25		5.13	50				
	10	11836			10.5	25		5.28	50				
	12	11837			13	25		5.27	50				
	16	11838			17	28		5.18	50				
95 Sf	8	11886	15.0	20.0	8.4	29	22	8.16	50				
	10	11840			10.5	29		8.41	50				
	12	11841			13	29		8.50	50				
	16	11842			17	29		8.57	50				
120 Sf	8	11844	17.0	22.0	8.4	32	25	9.47	50				
	10	11845			10.5	32		9.77	50				
	12	11846			13	32		9.90	50				
	16	11847			17	32		10.03	50				
150 Sf	10	11849	19.0	25.0	10.5	36	28	14.55	25				
	12	11850			13	36		14.65	25				
	16	11851			17	36		14.88	25				
185 Sf	10	11889	21.0	27.0	10.5	39	29	17.05	25				
	12	11890			13	39		17.17	25				
	16	11892			17	39		17.45	25				
240 Sf	10	11894	22.5	29.0	10.5	42	34	22.30	20				
	12	11895			13	42		22.45	20				
	16	11897			17	42		22.82	20				

Battery-powered compression tool AP 10

without dies



Battery-powered hydraulic compression tool for crimping cable lugs and butt connectors up to 240 mm².

press capacity: approx. 55 kN
 operating pressure: 700 bar (70 MPa)
 operating voltage: 14.4 volt
 tool measurements: B 95 x L 350 x H 310 mm
 weight: 3.6 kgs (incl. battery)
 battery charger: 220-240V 50-60Hz 7.2-18V
 time of loading: approx. 50 minutes

delivery completely with battery, battery charger, strap for transport and safety and transport plastic case

article-no.: 91120

Battery-powered compression tool APi 20

without dies



Battery-powered hydraulic compression tool for crimping cable lugs and butt connectors up to 300 mm².

press capacity: approx. 62 kN
 operating pressure: 700 bar (70 MPa)
 operating voltage: 14.4 Volt
 tool measurements: B 95 x L 350 x H 310 mm
 weight: 3.90 kgs (incl. battery)
 battery charger: 220-240V 50-60Hz 7.2-18V
 time of loading: approx. 50 minutes

delivery completely with battery, battery charger, strap for transport and safety and transport plastic case

article-no.: 91142

Battery-powered compression tool APi 30

without dies



Battery-powered hydraulic compression tool for crimping cable lugs and butt connectors up to 400 mm².

press capacity: approx. 80 kN
 operating pressure: 700 bar (70 MPa)
 operating voltage: 14.4 Volt
 tool measurements: B 95 x L 406 x H 310 mm
 weight: 5.4 kgs (incl. battery)
 battery charger: 220-240V 50-60Hz 7.2-18V
 time of loading: approx. 50 minutes

delivery completely with battery, battery charger, strap for transport and safety and transport plastic case

article-no.: 91162

Compression dies for AP 10 and HPi 10

for finewiring conductors according to Siemens standard SN 71322



dies WM-shape

for crimping cable lugs and butt connectors

according to Siemens standard SN 71322, for finewiring conductors

cross-section mm ²	article no.	crimping quantity	cross-section mm ²	article no.	crimping quantity
10Sf / 25Sf	91441		95Sf	91445	
16Sf / 35Sf	91442	look at	120Sf	91446	look at
50Sf	91443	page	150Sf	91447	page
70Sf	91444	8	185Sf	91448	8

Compression dies for APi 20 and HPi 20

for finewiring conductors according to Siemens standard SN 71322



dies WM-shape

for crimping cable lugs and butt connectors

according to Siemens standard SN 71322, for finewiring conductors

cross-section mm ²	article no.	crimping quantity	cross-section mm ²	article no.	crimping quantity
10Sf	91745		95Sf	91751	
16Sf	91746	look at	120Sf	91752	look at
25Sf	91747	page	150Sf	91753	page
35Sf	91748	8	185Sf	91754	8
50Sf	91749		240Sf	91755	
70Sf	91750				

Compression dies for APi 30/APi 35 and HPi 30/HPi 35 and HPW 15 and HPW 17

for finewiring conductors according to Siemens standard SN 71322



dies WM-shape

for crimping cable lugs and butt connectors

according to Siemens standard SN 71322, for finewiring conductors

cross-section mm ²	article no.	crimping quantity	cross-section mm ²	article no.	crimping quantity
10Sf	91765		95Sf	91771	
16Sf	91766	look at	120Sf	91772	look at
25Sf	91767	page	150Sf	91773	page
35Sf	91768	8	185Sf	91774	8
50Sf	91769		240Sf	91775	
70Sf	91770		300Sf	91776	

Crimping instructions for cable lugs and connectors

according to Siemens standard SN 71322, for finewiring conductors WM-shape

Crimping instructions

Minimum necessary crimping quantity of WEITKOWITZ cable lugs and connectors according to Siemens standard SN 71322

cross-section in mm ²	pressing quantity x width	Weitkowitz type classifications and product numbers										
		HP110 91111	AP10 91120	HP120 91132	API20 91142	MP 2 90260	HPW15 90602	HPW17 90651	HP130 91152	HP135 91157	API30 91162	API35 91167
10	1 x 7 mm											
16	1 x 7 mm											
25	2 x 5 mm											
	1 x 10 mm											
35	2 x 5 mm											
	1 x 10 mm											
50	2 x 5 mm											
	1 x 12 mm											
70	2 x 5 mm											
	1 x 12 mm											
95	2 x 7 mm											
	2 x 7 mm											
120	2 x 7 mm											
150	3 x 5 mm											
185	3 x 5 mm											
240	3 x 7 mm											
300	3 x 7 mm											

Attention: Take care of the ' Assembly of cable lugs and connectors ' when processing.
Connectors: Minimum quantity of pressing for each side.